

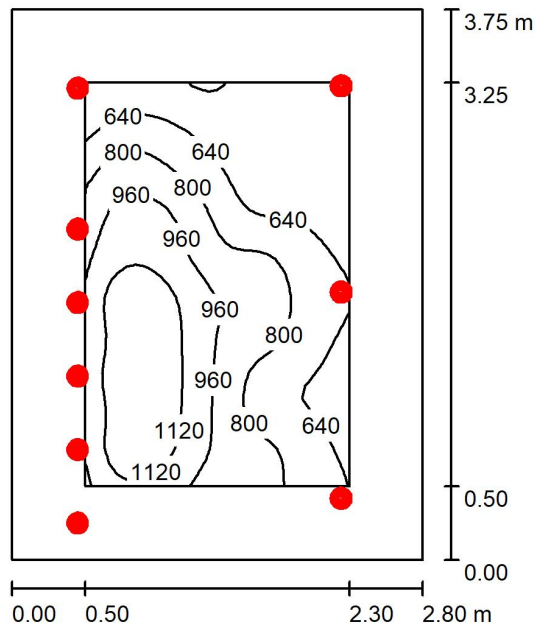
**PWM**

Partner for Contact:  
Order No.:  
Company:  
Customer No.:

Date: 27.09.2024  
Operator:

Operator  
Telephone  
Fax  
e-Mail

## Recepcja / Summary



Height of Room: 2.420 m, Mounting Height: 2.420 m, Maintenance factor: 0.90

Values in Lux, Scale 1:49

Surface	$\rho$ [%]	$E_{av}$ [lx]	$E_{min}$ [lx]	$E_{max}$ [lx]	$u0$
Workplane	/	832	464	1257	0.558
Floor	20	569	86	929	0.150
Ceiling	70	72	49	86	0.679
Walls (4)	50	124	46	815	/

### Workplane:

Height: 0.850 m  
Grid: 32 x 32 Points  
Boundary Zone: 0.500 m

Illuminance Quotient (according to LG7): Walls / Working Plane: 0.128, Ceiling / Working Plane: 0.086.

### Luminaire Parts List

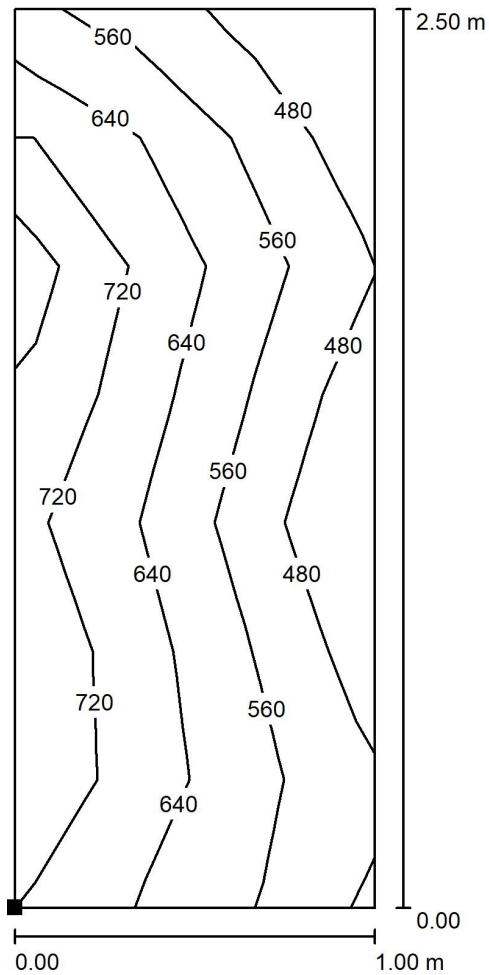
No.	Pieces	Designation (Correction Factor)	$\Phi$ (Luminaire) [lm]	$\Phi$ (Lamps) [lm]	P [W]
1	9	ERCO A6000484 Quinta Recessed floodlight 1xLED 12.4W warm white (1.000)	864	864	16.1
Total:			7776	7776	144.9

Specific connected load:  $13.80 \text{ W/m}^2 = 1.66 \text{ W/m}^2/100 \text{ lx}$  (Ground area:  $10.50 \text{ m}^2$ )

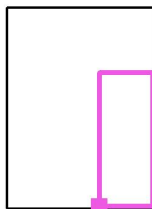


Operator  
Telephone  
Fax  
e-Mail

## Recepcja / Stół / Isolines (E, Perpendicular)



Position of surface in room:  
Marked point:  
(1.737 m, 0.040 m, 0.850 m)



Values in Lux, Scale 1 : 20

Grid: 3 x 7 Points

$E_{av}$ [lx]	$E_{min}$ [lx]	$E_{max}$ [lx]	$u_0$	$E_{min} / E_{max}$
609	423	794	0.695	0.533